

VOLUNTEER TRAINING

The Pastoral Care team has many opportunities for volunteers committed to supporting the spiritual life of residents within Bethany. A volunteer training course and ongoing educational opportunities are available to support volunteers.

Commitment *Compassion*



Bethany Care Society

Bethany Care Society is one of western Canada's largest faith-based, not-for-profit providers of health, housing and community services for people across the continuum of adult aging. Bethany advocates for public awareness and social change that will promote healthy communities and benefit both seniors and people with disabilities.

Bethany realizes its mission of 'Creating Caring Communities' through its inspiring leadership, responsive services, innovative programs, exceptional people and life affirming relationships.

Bethany Care Foundation

Bethany Care Foundation supports Bethany Care Society in its commitment to create caring communities for seniors and persons with disabilities. We invite you to share in the endless possibilities for community support and investment.

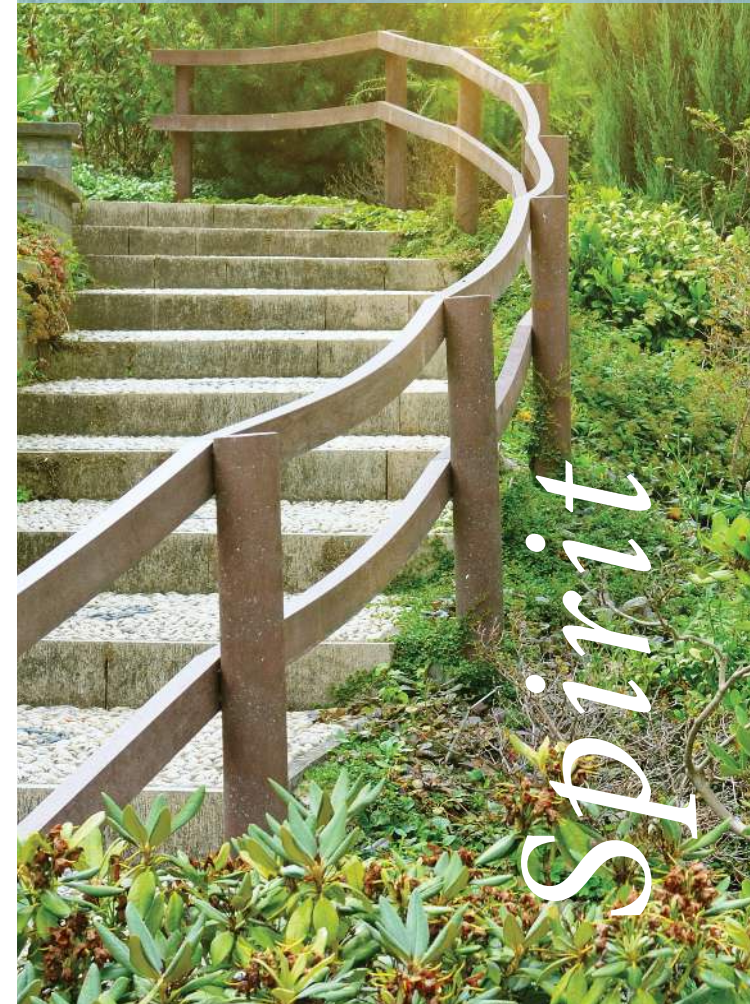
www.bethanycarefoundation.com

www.bethany seniors.com

403-210-4600
or
1-888-410-4679

1001 - 17th Street NW
Calgary, AB T2N 2E5

Pastoral Care



bethany
CREATING CARING COMMUNITIES



CREATING CARING COMMUNITIES IN BETHANY

Pastoral Care Chaplains at Bethany Care Society provide spiritual care and support to residents, families, staff and volunteers throughout the organization. With open hearts and minds, Chaplains are sensitive to the diverse expressions of faith and spirituality that are represented within the many Bethany communities. Chaplains provide support and guidance to families of residents.

Faith

Living

CONTACTING A CHAPLAIN

The Chaplains can be contacted by phone:

Bethany Airdrie
403.948.6022

Bethany Calgary
403.284.6000

Bethany Cochrane
403.932.6422

Bethany Didsbury
403.335.4775

Bethany Harvest Hills
403.226.8200

Bethany CollegeSide
403.357.3700

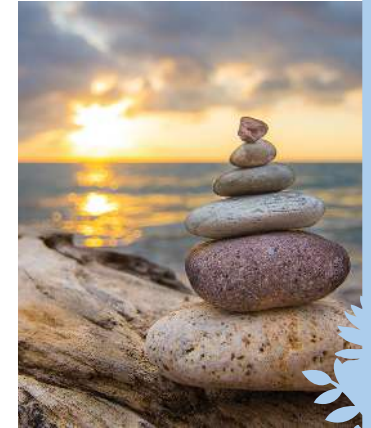
Bethany Sylvan Lake
403.887.7741

Housing Chaplain
403.235.5766

Pastoral Care Team
403.284.6004

PART OF THE HOLISTIC APPROACH TO CARE

Pastoral Care is an integral part of Bethany's philosophy of caring for the whole person — mind, body and spirit. As certified caregivers, Chaplains work in collaboration with interdisciplinary teams to provide resident care. Pastoral Care is also available to all residents in Bethany's housing and supportive living communities.



"You shall love the Lord your God with all your heart and with all your soul, and with all your strength, and with all your mind; and your neighbour as yourself."

Luke 10.27

Services we offer:

- One-on-one visitation
- Grief and bereavement counselling
- Spiritual care at end of life
- Expertise ministering to persons with dementia
- Weekly inter-denominational opportunities for worship
- Spiritual music, Bible study and prayer
- Pastoral presence in housing and supportive living communities
- Specialized programs and worship

we are responsible

we show respect

we care